



Alltrax XCT Function Knob Boxes: FNKEY for XCT REGEN Motor Controllers

File: DOC113-021-A_FNKEY-XCT_Operators-Manual.pdf, Released Rev A, EC-091418
ALLTRAX PN: FNKEY-XCT (Identical in function as the FNKS-XCT control box)

The XCT motor controllers have "User Inputs" or commonly called Personality Switches that allow for preset user profiles or interactive adjustments of Speed or Regen while driving. XCT Controllers PRIOR to AUGUST 2016 may not have the FN 3-pin integrated connector in the XCT J4-J5-J6 connector well (See WEB SITE for serial number cutoff). An adapter kit for all older controllers taps into the carts wire harness.

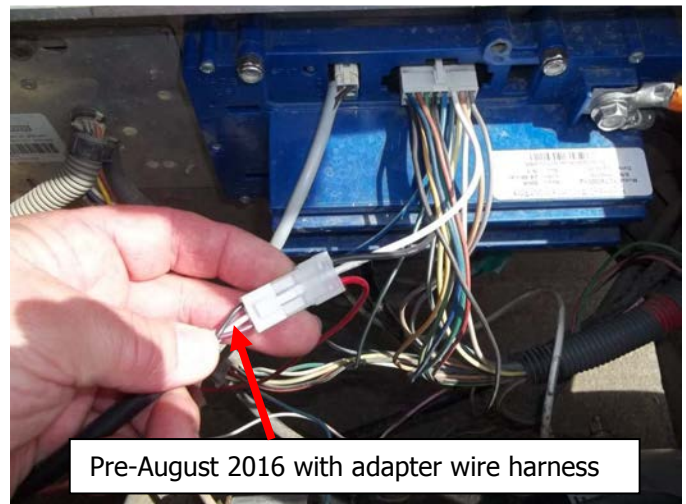
Use TOOLKIT software (Version 3.0 or above) to enable the new Function Control features. Newer XCT controllers built ON or AFTER August 2016 will have the 3-pin connector to directly plug the FN boxes into the XCT controller J4-J5-J6.

FNKEY with Mode KEY Switch + Regen knob. The MODE switch can select between three preset user profiles or personality modes.

- N = Normal mode (Street mode)
- 1 = User 1 profile (Performance mode)
- 2 = User 2 profile (Young Adult / TURF mode)

The Mode select user profiles are set up in the Alltrax Toolkit Version 3.0 (or higher) and saved into memory.

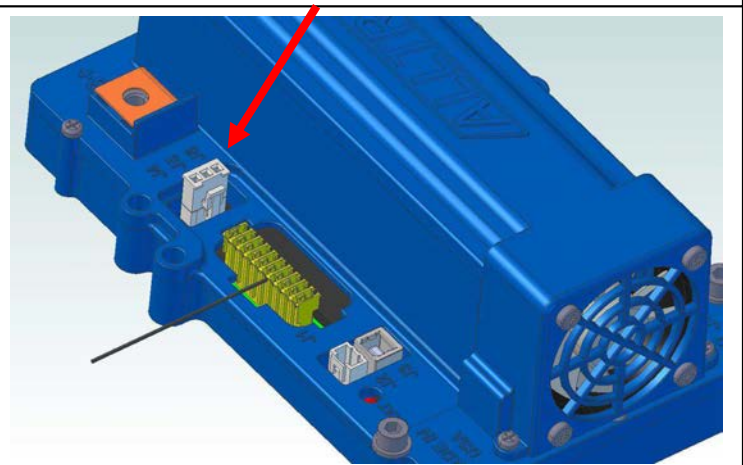
The REGEN knob then is adjusted based on your profile from mild to wild.



FNKEY
One Potentiometer & 1-three position KEY switch



After-August 2016 with Integrated J4-J5-J6 Connector



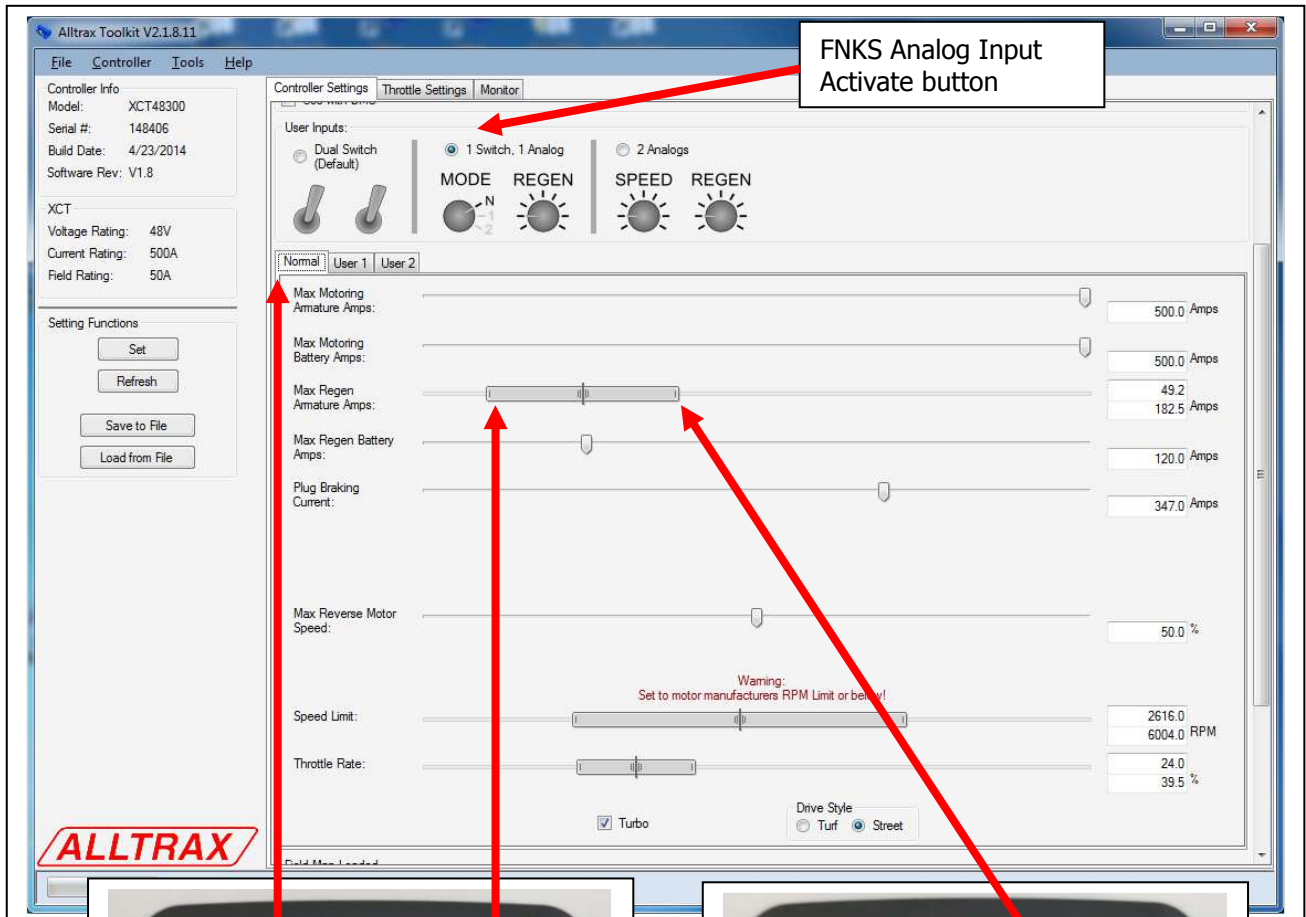
Download the latest Alltrax TOOLKIT Version 3.0 (or above) from the Alltrax web site: www.alltraxinc.com. Using toolkit, the function box "MODE knob" selects the THREE user profiles, Normal, User 1, and User 2. Each "profile" is set up for a mode you wish to select such as:

- N = Normal mode (Street mode)
- 1 = User 1 profile (Performance mode)
- 2 = User 2 profile (Young Adult / Turf mode)

For Regen you can set the Minimum and max values in EACH profile that correlate to the full left of the knob (CCW) and the max value slider for the full right knob (CW)

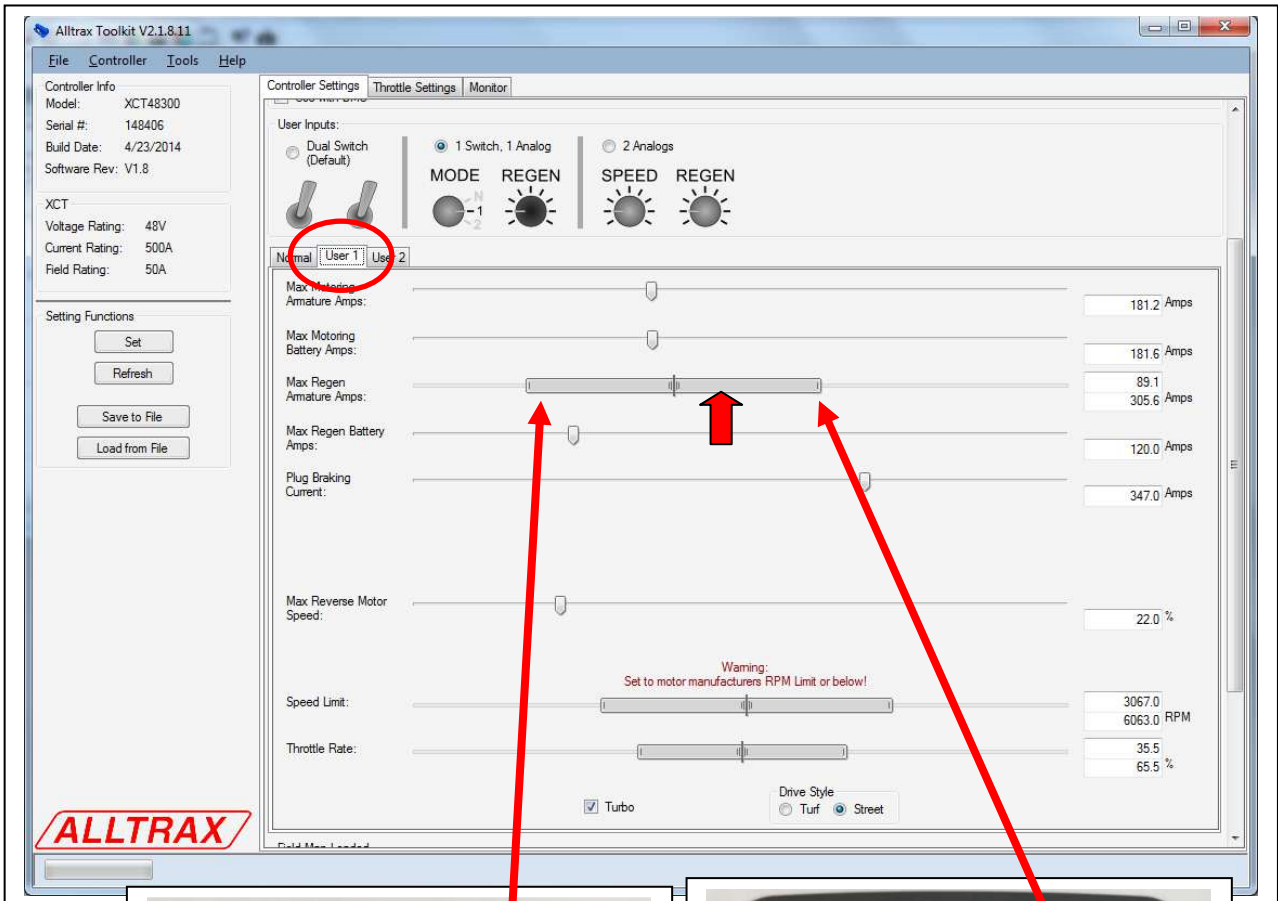
Click the **1-SWITCH, 1-ANALOG** Input radio button to activate the FNKEY control box.

In this example is NORMAL Mode or commonly used as Street Mode. Moderate speed, acceleration, & regen.



USER 1 example, more of a "Performance Mode" the speed limit RPM is increased and spread across 3067 to 6063RPM (depends on the motor RPM limits). Regen set for 89 amps up to a steep grade crawler of 305amps.

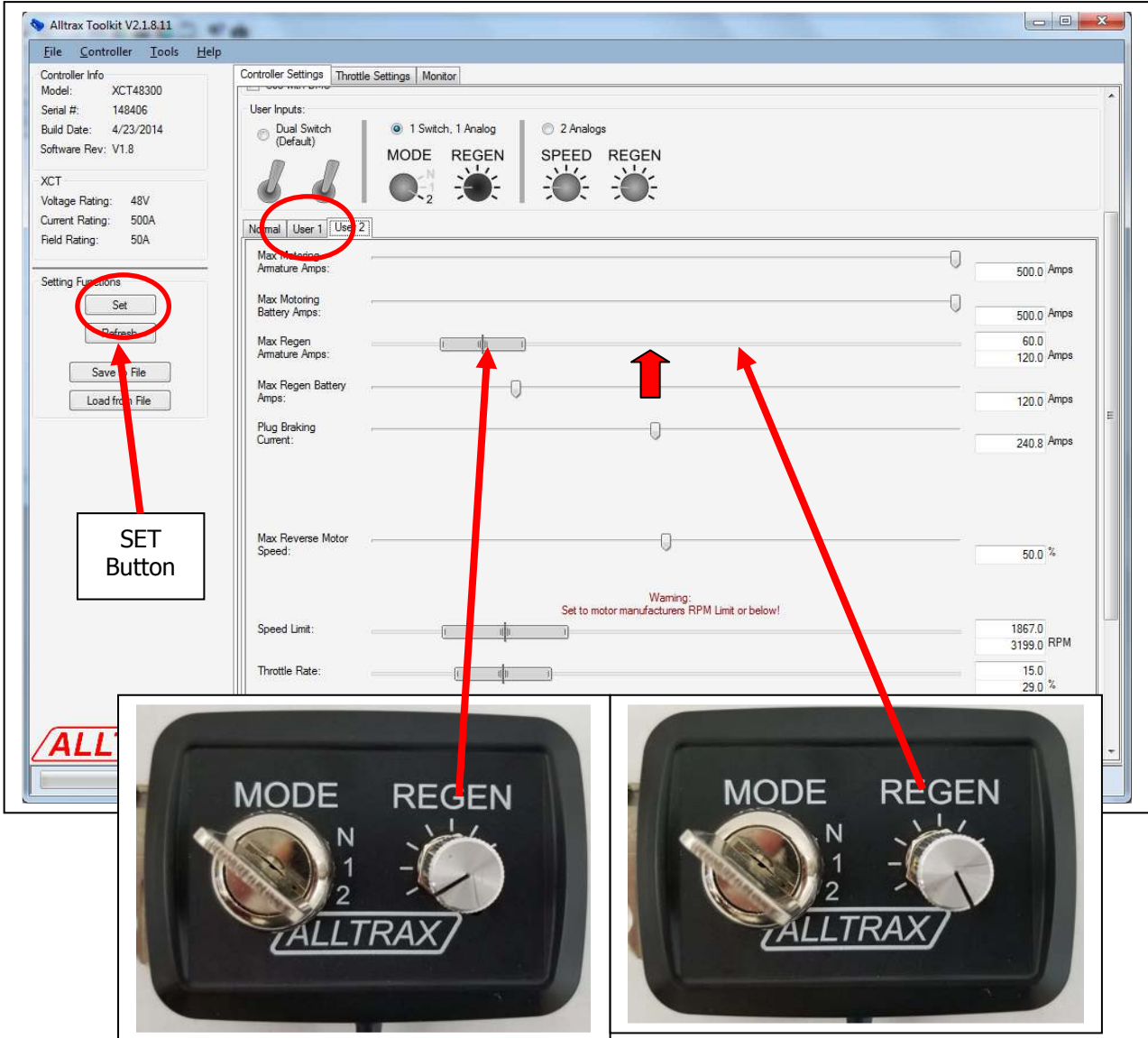
The software also has a feature to "Highlight the knob" when you hover over the slider bar with your mouse. In this example the mouse (red arrow) is over the REGEN slider.





USER 2 example, more of a “Child or Turf Mode” the speed limit RPM is spread across 1867 to 3199RPM (depends on the motor RPM limits) and Regen is set for a soft 86amps up to a 120amps. We have also reduced the throttle rate to calm things down for the Child Mode. However – if the FNKEY box is unplugged, the controller defaults to the normal mode and minimum speed set in software as a fail safe (I.E. smarts kids try to unplug the box...)

The software also has a feature to “Highlight the knob” when you hover over the slider bar with your mouse. This helps identify which slider you’re affecting. In this example the mouse (red arrow) is over the REGEN slider.



Once you have your settings configured – PRESS SET to program the controller and you’re all done!

If you have any feedback or comments for these instructions, please email info@alltraxinc.com as we value our customers input, we make feature rich performance products based on our customers input.
Made in USA